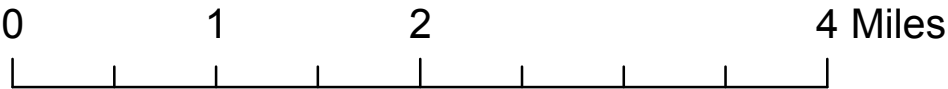
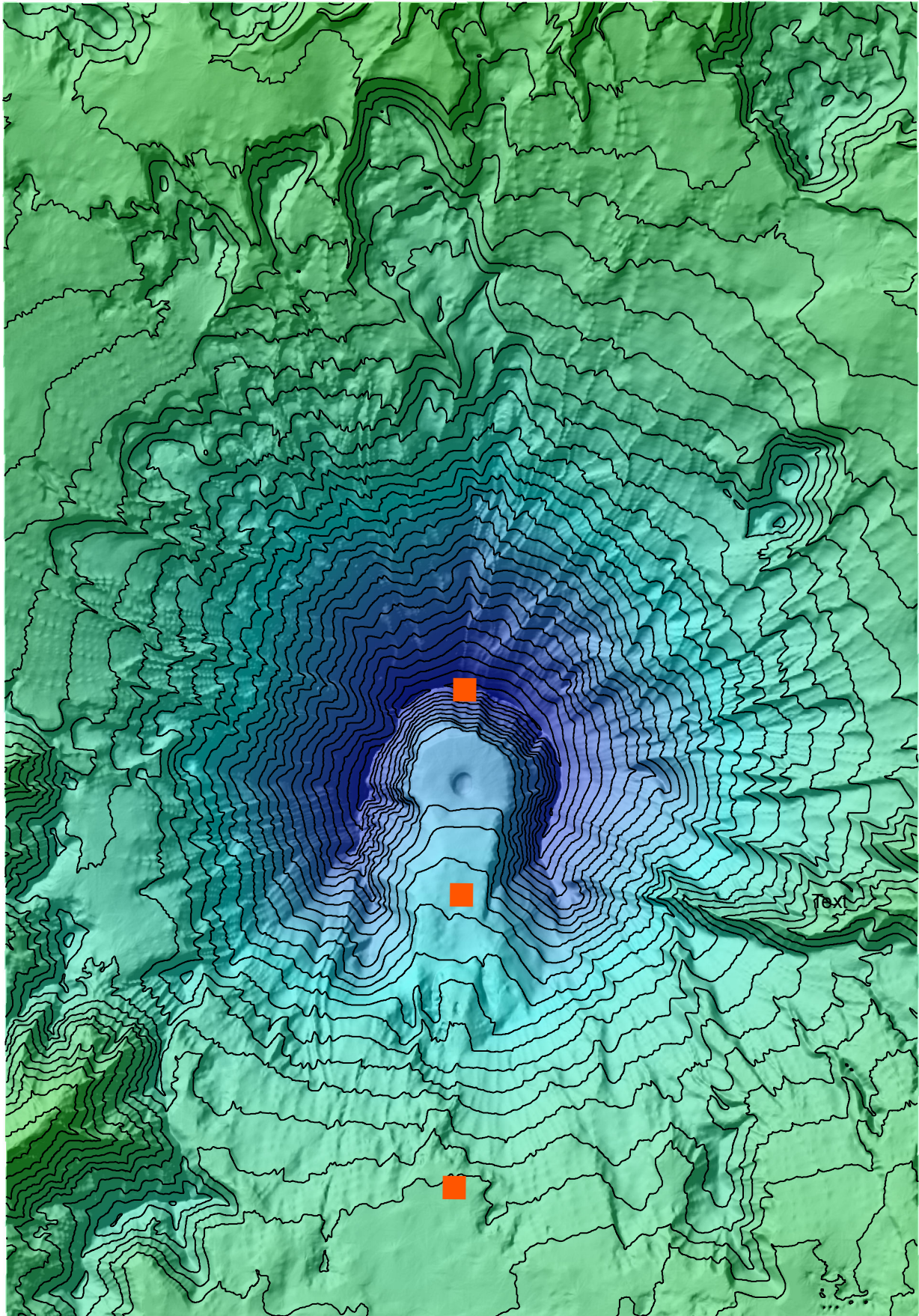


Mt. St. Helens Before And After Eruption of 1980

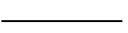
Elevation Map After Eruption



The map to the left indicates the countour lines after the eruption, elevation levels after the eruption, and the different viewpoints at the location. The maps direction is facing south, with the northern side of the mountain at the bottom of the map.

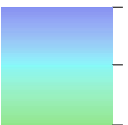


View Points



Countour Lines (200ft)

Elevation After Eruption (ft)

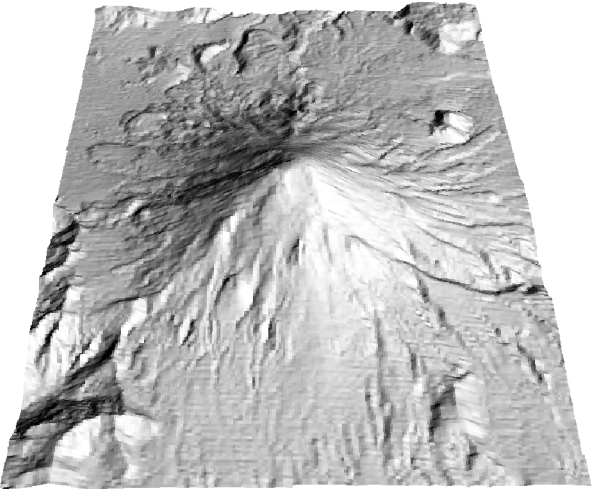
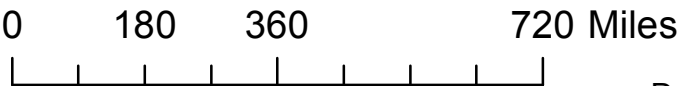
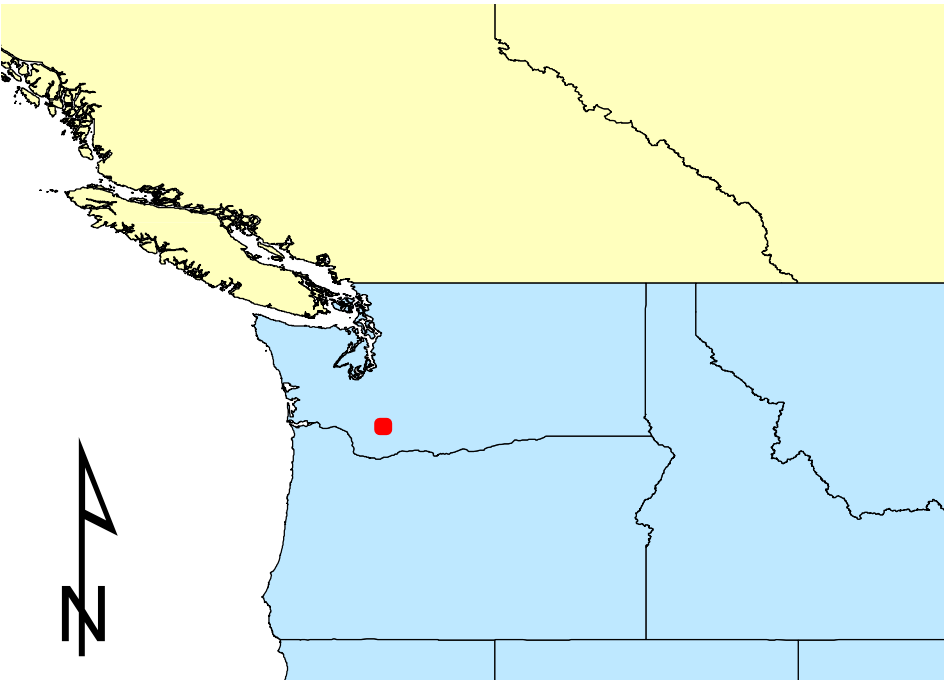


High : 8367

Low : 2231

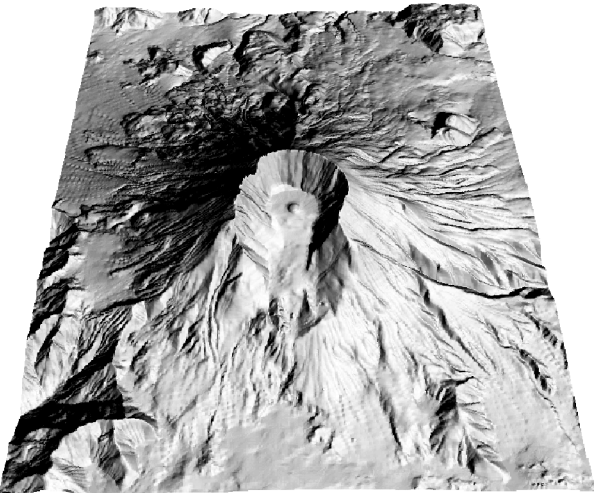
Point	Elevation (feet)	Aspect (degrees)	Slope (percentage)
0	5669	41.9872	18.5899
1	8133	26.2168	74.7913
2	3790	333.435	9.5202

Location of Mt. St. Helens



Before Eruption

The map above shows Mt. St. Helens before the 1980 eruption. The map's direction is facing south, with the northern side of the mountain at the bottom of the map.

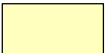


After Eruption

The map above shows Mt. St. Helens after the 1980 eruption. The map's direction is facing south, with the northern side of the mountain at the bottom of the map.



US States



Canadian Provinces

The map to the left is an extent indicator to show the location of Mt. St. Helens in the State of Washington.